



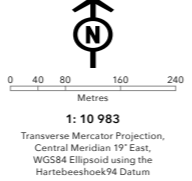
- |   |   |  |
|---|---|--|
| <ul style="list-style-type: none"> <li>● Accommodation and food service activities</li> <li>● Administrative and support service activities</li> <li>● Agriculture, forestry and fishing</li> <li>● Arts, entertainment and recreation</li> <li>● Construction</li> <li>● Education</li> <li>● Electricity, gas, steam and air-conditioning supply</li> <li>● Financial and insurance activities</li> <li>● Human health and social work activities</li> <li>● Information and communication</li> <li>● Manufacturing</li> <li>● No activity</li> </ul> | <ul style="list-style-type: none"> <li>● Other service activities</li> <li>● Professional, scientific and technical service activities</li> <li>● Public administration and defence, compulsory social security service activities</li> <li>● Real estate activities</li> <li>● Transportation and storage</li> <li>● Unattainable</li> <li>● Vacant unit</li> <li>● Water reserve</li> <li>● Water supply, sewerage, waste management and remediation activities</li> <li>● Wholesale and retail trade, repair of motor vehicles and motorcycles</li> <li>● IRT bus stops</li> </ul> | <ul style="list-style-type: none"> <li>■ Road reserve</li> <li>■ Under construction</li> <li>■ Vacant land</li> <li>■ Private residence</li> <li>■ Suburbs</li> <li>■ Land parcel</li> <li>■ Greenbelt</li> <li>■ Open space</li> <li>■ Vacant building</li> <li>■ Wetlands</li> </ul> |
|---|---|--|



THIS MAP WAS COMPILED BY:  
**CITY MAPS**  
 Development Information and GIS  
 Tel: +27 21 487 2711  
 Fax: +27 21 487 2821  
 city.maps@capetown.gov.za

**Please note:**

- Business names, economic activity and contact details were collected through primary data collection.
- Business contact details were verified directly from the business' website.
- In the event that the name or economic activity of a business could not be identified during primary data collection and it does not have an active website or contact details available to confirm business details, it has been listed as unattainable.



**INDUSTRIAL SURVEY  
 BROADLANDS  
 INDUSTRIA**



**CITY OF CAPE TOWN  
 ISIXEKO SASEKAPA  
 STAD KAAPSTAD**



**INVEST CAPE TOWN**  
 COLLABORATE | ENABLE | PROMOTE

**For more information on this industrial area contact:**  
 Economic.Research@capetown.gov.za

Produced by Enterprise and Investment and Organisational, Policy and Planning Departments: Directorate of the Mayor



# Broadlands Industria | 2017

Making progress possible. Together.

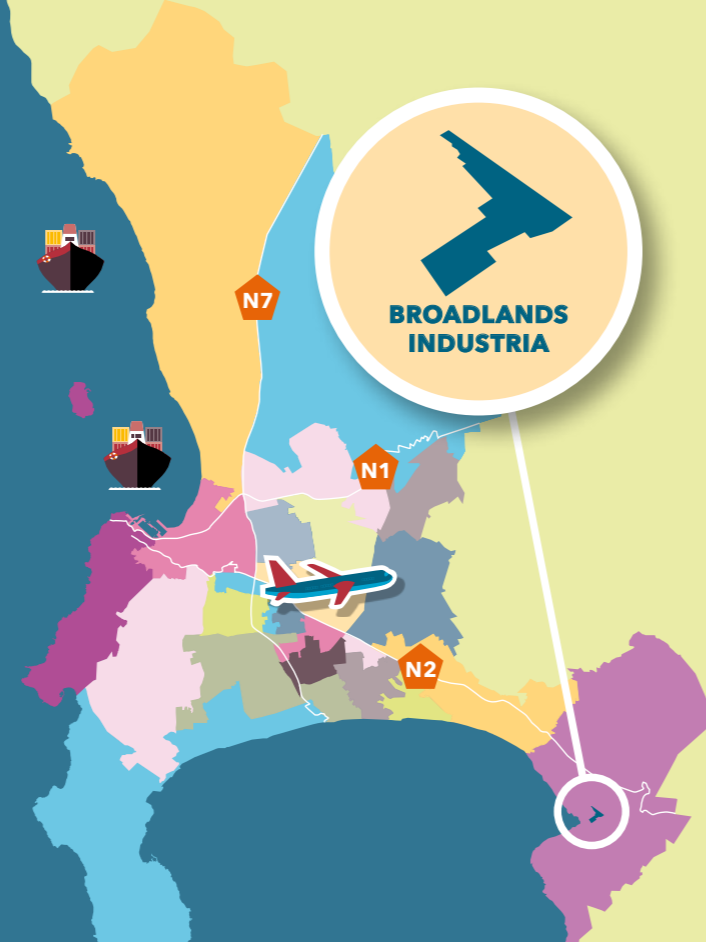
## BROADLANDS INDUSTRIA AT A GLANCE

The Broadlands Industria is located just off the N2 intersection of Broadlands Road in Somerset and in close parameters of the Onverwacht and Strand Industrial areas.

Broadlands Industria is mapped across 172 land parcels of which 71% or 122 land parcels are occupied by economic activity and the remaining 29% or 50 of these land parcels are not.

The 122 land parcels that are economically active in the Broadlands industrial area host 134 businesses. Of the 134 businesses, 123 businesses' economic activity could be identified while 11 businesses' economic activity could not.

**172 LAND PARCELS**   **134 BUSINESSES**



## PROPERTIES AVAILABLE

**45**

VACANT LAND PARCELS

**0**

VACANT BUILDINGS

RANGE OF SQM LAND:  
**484 000 m<sup>2</sup> - 593 000 m<sup>2</sup>**

RANGE OF SQM LAND\*:  
**0 m<sup>2</sup>**

LAND PARCEL SIZE RANGE:



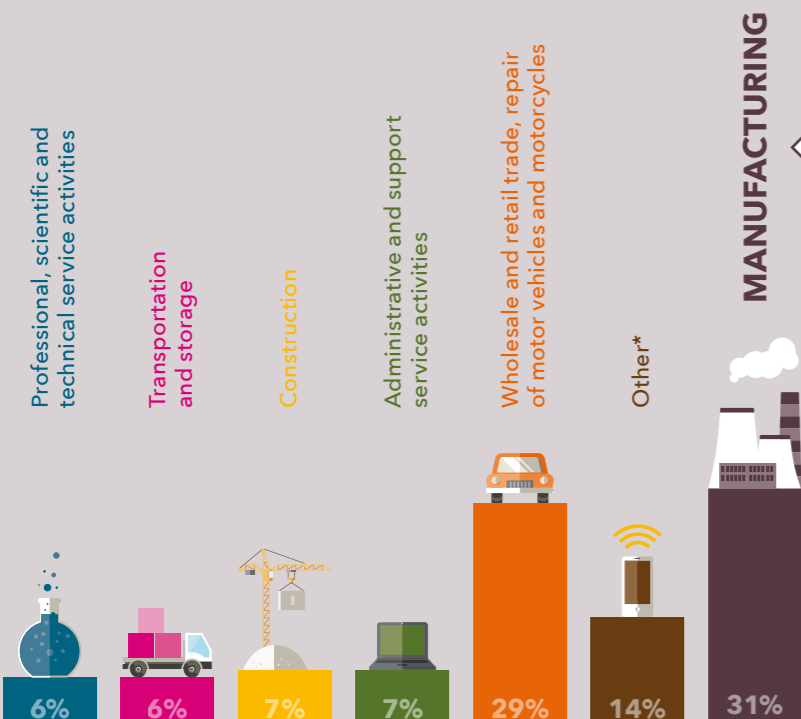
LAND PARCEL SIZE RANGE:



● 0 - 4 999 m<sup>2</sup>   ● 5 000 - 9 999 m<sup>2</sup>   ● 10 000 - 49 999 m<sup>2</sup>   ● 50 000 - 99 000 m<sup>2</sup>   ● 100 000+ m<sup>2</sup>

\*sqm of land parcel on which the business sits.

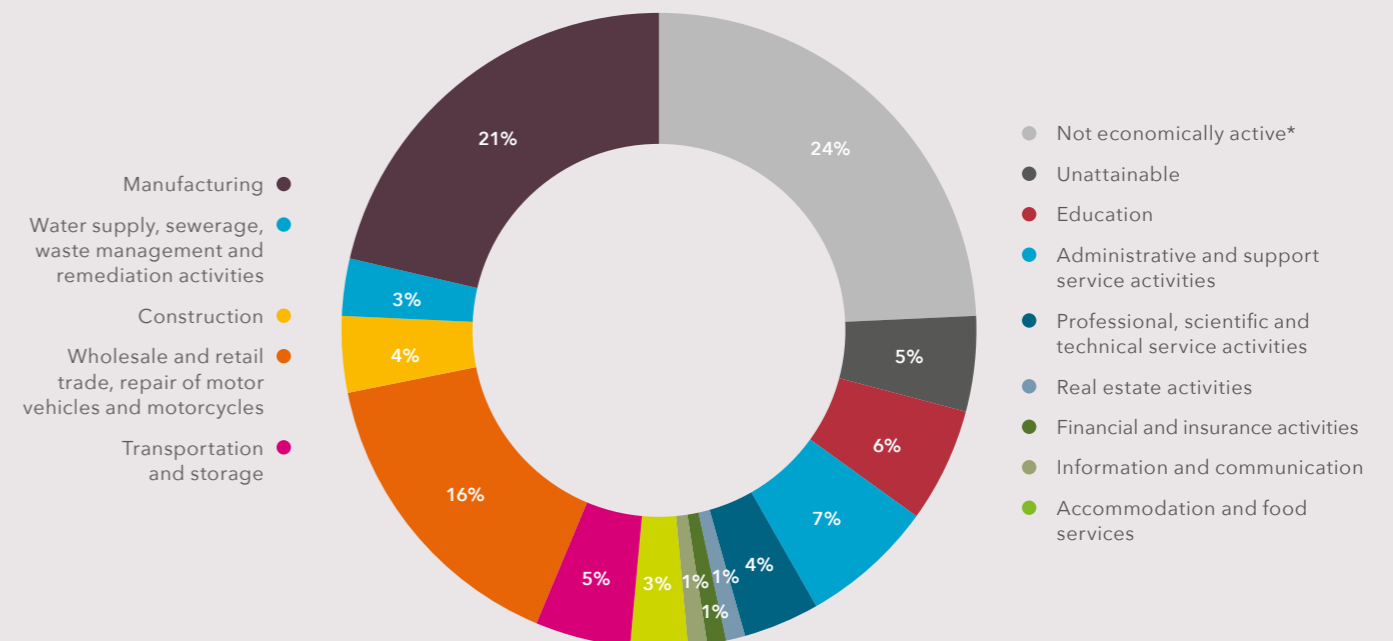
## ECONOMIC ACTIVITY OF BUSINESSES



### Number of manufacturing businesses per division

Chemicals and chemical products	4
Computer, electronic and optical products	1
Fabricated metal products, except machinery and equipment	9
Food products	1
Furniture	5
Other non-metallic mineral products	5
Other transport equipment	3
Paper and paper products	2
Repair and installation of machinery and equipment	2
Rubber and plastic products	2
Wood and products of wood and cork, except furniture; manufacture of articles of straw and plaiting materials	5

## DISTRIBUTION OF LAND PARCEL USAGE



\*Accommodation and food service activities; Education; Financial and insurance activities; Information and communication; Real estate activities; Water supply, sewerage, waste management and remediation activities

\*Not economically active consists of 23% vacant land and 1% road reserves.